

# BIODROGA





True Beauty	4	Natural cosmetics from the Black Forest	80
Our promise	7	Our secret – Local Herbs from the Black Forest	81
<hr/>		Our cooperation – Herb Farm	82
Indulgence for Skin and Mind	10	Our secret – Healing Moor Inspired by the Black Forest	83
Our secret – Selected ingredients from the Black Forest	13	Product geography	86
Product geography	14	Product overview	87
Product overview	16	Personalized skincare routine	100
<hr/>			
Skincare close to medicine	50		
Our secret – Individual care concept	52		
Our secret – Highly effective ingredients + specific acids	53		
Derma Membrane Complex	54		
Product geography	55		
Product overview	56		
<hr/>			

# TRUE BEAUTY

Our heart beats for true beauty.

We bundle our energy and knowledge and, together with experts, develop honest products, holistic treatments and offer unique care moments in our institutes, in the store and at home. In this way, we make our contribution to individual well-being and natural radiance.

We are Made in the Black Forest. Made by & for Professionals. Made Clear.



## True Heritage.

Born in Baden-Baden, at home in the Black Forest. Since 1959, we offer comprehensive beauty know-how and develop innovative high-performance cosmetics and individual treatment concepts. With our brand concepts, we take you into a world of relaxation, peace and beauty. All our products are 100% "Made in Germany", "Made in Baden-Baden", "Made in Black Forest" – to pass onto you the relaxing environment embodied in our products.



## True People.

Expert knowledge at eye level. True beauty and well-being are ensured by experts in all areas. With our decades of expertise, we are a trusted specialist and are happy to pass on our knowledge. Our experienced team of cosmetics experts, consisting of our own research & development, training, technology and sales, is always in contact with our worldwide network of institutes. In this way, the approach of true beauty can be spread globally and our customers can be pampered with the best individual treatments and targeted care for every skin need. In the institute, in the store, at home.



## True Cleanness.

Reduced to the essentials, for people and the environment. Clean formulations meet high-performance effect. We celebrate the perfect interplay of innovative, "clean" ingredients with the latest active principles. This is part of our DNA and has always been anchored in our name: BIO = organic ingredients, DROGA = highly effective substances. We have always aligned our formulations with this in order to enable efficient care that is free of distractions. That is why we do not use Mineral Oil, Parabens and PEGs.



## True Skincare.

Holistically thought out, individually cared for. Give your skin a break – or help it when it needs support. With our holistic treatment approaches, from intensive treatments to home care and a diverse, type-appropriate skin care range, we offer everything for beautiful skin. Unique active complexes and dermatologically proven, significant effect results open up a new dimension of skin care. For individual beauty! BIODROGA – a tribute to the miracle of the skin.



## True Experience.

True beauty and well-being anywhere. Anyone who feels beautiful is perceived as such. This belief in one's own charisma and the appreciation of oneself is the secret of true beauty. That's why BIODROGA is the professional partner for unforgettable treatments in exclusive institutes and individually tailored home treatments – a brand experience for all the senses, for true beauty.



# True Beauty

## Our promise.

Born in Baden-Baden, at home in the Black Forest. We have been united by the belief in true beauty. That is why we develop honest, clean products and holistic treatments for unique moments of skincare.

We commit ourselves to Clean Beauty. Our skin-friendly cosmetics stand for sustainable beauty care and are free from critically discussed ingredients. Clean formulations meet high performance effects.

Clean formulations meet high performance effects.

We therefore deliberately refrain from using the following ingredients in all our products:



Mineral oil & parabens



PEGs



Silicones

In addition, if possible, we refrain from using the following ingredients:



Perfume



Dyes



Animal-based ingredients



Lactose-containing ingredients



Gluten-containing ingredients

# BIODROGA

## BIODROGA

bioscience institute

- Pampering of skin and mind
- Ingredients from the Black Forest in combination with biotechnological ingredients
- Clean Beauty

## BIODROGA

medical institute

- Solving skin problems
- Power ingredients in combination with innovative acid concept
- Clean Beauty
- Vegan

## BIODROGA

organic institute

- Natural cosmetics with skincare effect – from the Black Forest
- Unique herbal complex in combination with healing moor extract
- Certified natural cosmetics
- Vegan



# BIODROGA

bioscience institute

## Pampering body and soul True Well-Being.

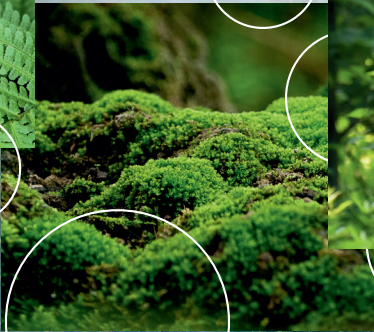
Learning from the nature of our homeland. We unite nature and science in a very special way – for best effectiveness and absolute well-being. BIODROGA Bioscience Institute stands for a strengthened skin feeling and moments of real beauty.

Our raw materials are always based on the model of nature. A large part of our ingredients are of natural origin or natural biological processes are determined by our founded knowledge. Our in-house Black Forest Complex unites the primordial forces of nature and provides a very special energy and relaxation.

Gift yourself with the pampering treatments and enjoy a break for all the senses and a youthful glow – like a short break in the Black Forest.








Our secret

## Selected ingredients from the Black Forest.



Our BIODROGA Black Forest Complex. The Black Forest: mysterious, mystical, and full of fascination. Mysterious stories and legends surround the Black Forest. In some places, trees, rocks, springs, and lakes are said to possess wondrous, almost magical powers. Over millions of years, nature has created an impressive landscape whose forces are still tangible today.

We went in search of clues in our homeland and discovered special treasures that the Black Forest holds within itself. Treasures which we make impressive use of for BIODROGA. Treasures, for your beauty!

The result is a unique, exclusive complex that combines the primordial forces of nature. United in itself: the Black Forest Complex. With elderflower, fern and moss it allows the skin to rest, brings it into balance, provides relaxation and gives it a special energy that is otherwise only attained through intensive nature experiences.

### **Elderflower**

- moisturizes and strengthens the skin
- anti-inflammatory & skin soothing
- also optimal for the regeneration of stressed skin

### **Fern**

- has a toning effect
- has an anti-inflammatory and soothing effect
- allows the skin to come back into balance

### **Moss:**

- the barrier function of the skin is supported and the skin moisture is increased
- the skin can adapt better to climatic stresses
- the resistance of the skin is strengthened

BIODROGA Bioscience Institute harmoniously combines biotechnological power ingredients with the unique, in-house Black Forest Complex. Perfectly tailored to the needs of your skin. For exceptional moments of care with a pampering factor.



# Product geography

## HEROES

BLACK FOREST SPRAY  
2-PHASE BLACK FOREST CONCENTRATE

## CLEANSING

CLEANSING OIL  
MILKY CLEANSER  
CLEANSING FOAM  
TONER  
10% ACID PEELING  
FACIAL EXFOLIATOR  
ANTIPERSPIRANT  
MAKE-UP REMOVER BALM

## DAILY CARE

### EYE CARE

HYDRA BOOST EYE CREAM  
LIFTING BOOST EYE BALM

### MOISTURE & BALANCE

24H CREAM-GEL  
24H CARE  
24H CARE RICH  
BASIC MOIST FLUID

## SLOW AGE

24H CARE  
24H CARE RICH

## REPAIR & PROTECT

ALL DAY PROTECTION SPF 20  
OVERNIGHT REPAIR CREAM

## ANTI AGE

24H CARE  
24H CARE RICH  
SERUM

## PERFECT AGE

24H CARE  
24H CARE RICH  
SERUM

## LUXURY CARE

### GOLDEN CAVIAR

24H CARE  
24H CARE RICH  
SHEET MASK

### PREMIUM SELECTION

HIGH PERFORMANCE CREAM

## EFFECT CARE

### EFFECT CARE

360° LIFTING SHEET MASK  
HYDRA BOOST CONCENTRATE  
LIFTING BOOST OIL CONCENTRATE  
VITAMIN BOOST CONCENTRATE

## MASK SENSATION

HYDRA BOOST MASK  
SKIN REJUVENATING MASK

## ESSENTIALS

### ESSENTIALS

THROAT + DÉCOLLETÉ TREATMENT

## MAKE-UP

### 360° FOUNDATION

FOUNDATION 01 Porcelain SPF 15  
FOUNDATION 02 Sand SPF 15  
FOUNDATION 03 Honey 3 SPF 15  
FOUNDATION 05 Rose SPF 15

## MEN

HYDRA POWER FLUID  
ANTI AGE RESCUE CARE

# BIODROGA

bioscience institute



# BLACK FOREST SPRAY

## Balance & Regeneration.

Our secret in a spray – Our search for clues in the mystical Black Forest has led us to unique treasures of nature. We use the power of this mysterious place and have created our own Black Forest Complex from plants that have shaped the face of our earth for millions of years, which is contained in all BIODROGA products. In a unique composition of ingredients, the "Black Forest powers" of elderberry, fern and moss are combined to create a skin care complex in a class of its own. The highest concentration and thus the concentrated power of active ingredients is contained in our Black Forest Spray. That is what makes it an absolute "must-have" for every skin.

### In this product, we deliberately refrain from adding:



Mineral oil & parabens



PEGs



Silicones



Dyes



Animal-based ingredients



Lactose-containing ingredients



Gluten-containing ingredients



## BLACK FOREST SPRAY

*with highly dosed Black Forest Complex*

- regenerates and vitalizes the face and body
- the fine spray mist has a calming effect



## 2-PHASE BLACK FOREST CONCENTRATE

### Vitality & Anti-Stress.

Our secret in an innovative concentrate – we use the power of the Black Forest in a dual-phase formula designed to soothe stressed skin, strengthen the skin barrier, and provide lasting hydration. The combination of oil and water phases revitalizes and refreshes the skin while offering a plumping effect. The Black Forest Complex, consisting of moss, elderberry, and fern, enhances the skin's resilience and imparts energy.

#### In this product, we deliberately refrain from adding:



Mineral oil &  
parabens



PEGs



Silicones



Animal-based  
ingredients



Lactose-  
containing  
ingredients



Gluten-  
containing  
ingredients



## 2-PHASE BLACK FOREST CONCENTRATE

*with Black Forest Complex, Cica & Panthenol*

- soothes stressed skin
- refreshes the skin
- provides hydration



# CLEANSING

Proper cleansing is essential. For most, it is an integral part of the daily care routine. Residues, accumulations of skin cells and dirt particles can irritate the skin and even lead to inflammation and promote the development of impurities. In addition, residues close the pores, the skin can no longer breathe, and high-quality ingredients of care products are blocked on the skin surface and cannot unfold their effect.



**In these products, we deliberately refrain from adding:**



Mineral oil & parabens



PEGs



Silicones



Dyes



Animal-based ingredients



Lactose-containing ingredients



Gluten-containing ingredients

## CLEANSING

### Cleansing Oil

*with Black Forest Complex, Bisabolol & Oil Complex*

- cleans and cares at the same time
- preserves the lipid mantle of the skin

## CLEANSING

### Milky Cleanser

*with Black Forest Complex, Pathenol & Licorice Extract*

- cleanses gently and thoroughly
- does not dry out the skin

## CLEANSING

### Cleansing Foam | oil free

*with Black Forest Complex, Pathenol & Allantoin*

- lush foam body with delicate texture
- cleans particularly mildly and thoroughly

## CLEANSING

### Toner | alcohol free

*with Black Forest Complex, Pathenol & Hamamelis*

- gently removes all residues
- alleviates irritation

## CLEANSING

### 10% Acid Peeling | perfume free

*with Black Forest Complex, AHA Acid & PHA Acid*

- intensive acid peeling
- thoroughly removes residues and cell waste

## CLEANSING

### Facial Exfoliator

*with Black Forest Complex, Pathenol & Jojoba Pearls*

- gently removes dead skin cells
- promotes blood circulation in the skin

## CLEANSING

### Make-up Remover Balm | perfume free

*with Black Forest Complex, Vitamin E & Oil Complex*

- thoroughly removes makeup and eye makeup
- works gently without irritating the skin

## CLEANSING

### Antiperspirant | alcohol free

*with Black Forest Complex, Pathenol & Allantoin*

- reliably protects against excessive sweating
- prevents odor formation

# EYE

Brightly beautiful eyes and a fresh, alert look... No problem! However, the skin around the eyes is much thinner than in the rest of the face and loses moisture and volume with increasing age. In addition, this area of the face is constantly stressed through movements such as blinking and pinching the eyes. Therefore, the sensitive eye area needs special care, which is specially tailored to its needs.

## EYE

Hydra Boost Eye Cream |  
perfume free

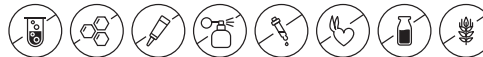
Moisture & Vitality

with *Black Forest Complex, Hyaluronic Acid & Caffeine*

- provides intensive moisture
- visibly combats signs of fatigue

**In this product, we deliberately refrain from adding:**

- Mineral oil & parabens
- PEGs
- Silicones
- Perfume
- Dyes
- Animal-based ingredients
- Lactosecontaining ingredients
- Glutencontaining ingredients



## EYE

### Lifting Boost Eye Balm

Tightening & Regeneration

*with Black Forest Complex, Spilanthol & Honey*

- reduces visible signs of aging around the eyes
- the skin is smoothed and tightened with an immediate and long-lasting lifting effect

**In this product, we deliberately refrain from adding:**

- Mineral oil & parabens
- PEGs
- Silicones
- Dyes
- Lactosecontaining ingredients
- Glutencontaining ingredients



# MOISTURE & BALANCE

## Moisture & Soothing.

Hydration plays an essential role in the condition of the skin and its well-being. If the skin loses too much moisture, the Natural Moisturizing Factor (NMF) decomposes, which protects the skin from drying out and this is at the expense of its protective function through the skin protection barrier. The result is an increased loss of moisture – a vicious cycle! The skin then becomes rough and loses suppleness, it tightens up and reacts more sensitively.

**In these products, we deliberately refrain from adding:**



Mineral oil & parabens



PEGs



Silicones



Dyes



Animal-based ingredients



Lactose-containing ingredients



Gluten-containing ingredients

**In addition, we refrain from using the following ingredients in the 24h Care, 24h Care rich and 24h Cream-Gel:**

## MOISTURE & BALANCE

Cream-Gel | perfume free & oil-free

Moisture & Soothing.

*with Black Forest Complex, Hyaluronic Acid & Cica*

- increases the moisture level
- soothes stressed skin and supports the skin protection barrier

## MOISTURE & BALANCE

24h Care

Moisture & Soothing.

*with Black Forest Complex, Hyaluronic Acid & Cica*

- intensively hydrates
- replenishes the moisture deposits

## MOISTURE & BALANCE

24h Care | rich

Moisture & Soothing.

*with Black Forest Complex, Hyaluronic Acid & Cica*

- hydrates intensively and evens out the lipid level
- replenishes the moisture deposits

## MOISTURE & BALANCE

Basic Moist Fluid

Moisture & Soothing.

*with Black Forest Complex, Hyaluronic Acid & Cica*

- ultra-light texture, absorbs instantly
- floods the skin with moisture



# SLOW AGE

## Energy & Radiance.

Already from the age of 25, the skin begins to age. Gradually, the cell metabolism slows down, the blood circulation decreases, the skin sometimes looks duller, the complexion appears tired, and the youthful radiance disappears.

The moisture depots are also no longer so well filled. Dryness and expression lines are particularly evident in the eye area.

The good news is that the right skincare routine slows down the aging process!

**In these products, we deliberately refrain from adding:**



Mineral oil &  
parabens



PEGs



Silicones



Dyes



Animal-based  
ingredients



Lactose-  
containing  
ingredients



Gluten-  
containing  
ingredients

## SLOW AGE

### 24h Care

Energy & Radiance

*with Black Forest Complex, Glycoproteins & Vitamin C*

- fights the first signs of skin aging
- gives energy and vitality

## SLOW AGE

### 24h Care | rich

Energy & Radiance

*with Black Forest Complex, Glycoproteins & Vitamin C*

- very rich texture
- fights the first signs of skin aging



# REPAIR & PROTECT

## Repair & Protection.

UV light is responsible for a very large part of the skin aging processes. The so-called photo-aging can be seen, for example, in changes in collagen fibers, reduced resistance of the skin and impairs the skin renewal process.

The UV exposure of the skin is not limited to sunbathing! UV light reaches us anytime and anywhere as soon as we are exposed to daylight. But especially when we spend a lot of time outdoors, active support of the repair functions and daily protection against UV light is essential.

**In these products, we deliberately refrain from adding:**



Mineral oil &  
parabens



PEGs



Silicones



Dyes



Animal-based  
ingredients



Lactose-  
containing  
ingredients



Gluten-  
containing  
ingredients

## REPAIR & PROTECT

### All Day Protection SPF 20

Repair & Protection

*with Black Forest Complex, Ceramides & Repair Complex*

- protects against UV-induced skin damage with SPF 20
- supports the skin's natural repair function

## REPAIR & PROTECT

### Overnight Repair Cream

Repair & Protection

*with Black Forest Complex, Ceramides & Repair Complex*

- supports the skin's nightly repair processes
- stressed skin can recover



# ANTI AGE

## Tightening & Regeneration.

At each stage of life, the skin has different needs. If the complexion appears more irregular and coarser and shows wrinkles, it needs the targeted support of its natural functions. A composition of biotechnological ingredients fulfills the desire for immediate and longterm anti-aging results. The care with lifting effect brings back youthful charisma and reduces the appearance of lines and wrinkles.

**In these products, we deliberately refrain from adding:**



Mineral oil &  
parabens



PEGs



Silicones



Dyes



Animal-based  
ingredients



Lactose-  
containing  
ingredients



Gluten-  
containing  
ingredients

## ANTI AGE

### 24h Care

Tightening & Smoothing

*with Black Forest Complex, Q10 & Instant Lift Complex*

- immediate and long-term anti-aging results with lifting effect
- preserves the youthful charisma

## ANTI AGE

### 24h Care | rich

Tightening & Smoothing

*with Black Forest Complex, Q10 & Instant Lift Complex*

- immediate and long-term anti-aging results with lifting effect
- lipid-poor skin is optimally cared for thanks to valuable oils and protected against dehydration

## ANTI AGE

### Serum

Tightening & Smoothing

*with Black Forest Complex, Q10 & Instant Lift Complex*

- immediate and long-term anti-aging results with lifting effect
- reduces the appearance of lines and wrinkles



# PERFECT AGE

## Plumping & Recontouring.

With the restructuring of the female hormonal balance in menopause, the formation of collagen and elastin in the connective tissue decreases – the skin loses elasticity and stability – the facial contours sag. Especially the lower part of the face with chin, lateral cheek area and transition to the neck begins to sag and hang. The entire shape of the face changes: the youthful V (V-shape) becomes an increasingly angular face (A-shape).

**In these products, we deliberately refrain from adding:**



Mineral oil & parabens



PEGs



Silicones



Animal-based ingredients



Lactose-containing ingredients



Dyes



Gluten-containing ingredients

**In addition, we refrain from using the following ingredients in the Perfect Age Serum:**

## PERFECT AGE

### 24h Care

Plumping & Recontouring

*with Black Forest Complex, Monk's Pepper & Biopeptides*

- offers a maximum of anti-aging active ingredients that holistically focus on the effects of decreasing -elasticity and sagging facial contours
- elasticity of the skin is sustainably improved

## PERFECT AGE

### 24h Care | rich

Plumping & Recontouring

*with Black Forest Complex, Monk's Pepper & Biopeptides*

- offers a maximum of anti-aging active ingredients that respond holistically to the effects of declining elasticity and sagging facial contours
- lipid-poor skin is optimally cared for thanks to valuable oils and protected against dehydration

## PERFECT AGE

### Serum

Plumping & Recontouring

*with Black Forest Complex, Monk's Pepper & Biopeptides*

- highly concentrated power serum for mature skin
- offers a maximum of anti-aging active ingredients that respond holistically to the effects of declining and sagging facial contours



# GOLDEN CAVIAR

## Luxury & Vitality.

The noble bouquet of active ingredients offers exquisite care for the daily beauty routine and pampers the skin in a unique way.

Biotechnological ingredients and luxurious caviar extract in delicate textures with a sensual fragrance flatter all the senses and make daily care something special.

The wide-ranging mode of action with a gentle anti-aging effect offers the skin a comprehensive care concept.

### In these products, we deliberately refrain from adding:



Mineral oil &  
parabens



PEGs



Silicones



Dyes



Lactose-  
containing  
ingredients



Gluten-  
containing  
ingredients

## GOLDEN CAVIAR

24h Care

Luxury & Vitality

*with Black Forest Complex, Caviar Extract & Retinal*

- hydrates and revitalizes the skin
- plumps up wrinkles

## GOLDEN CAVIAR

24h Care | rich

Luxury & Vitality

*with Black Forest Complex, Caviar Extract & Retinal*

- hydrates, nourishes and revitalizes the skin
- plumps up wrinkles

## GOLDEN CAVIAR

Sheet Mask

Luxury & Vitality

*with Black Forest Complex, Caviar Extract & Retinal*

- the fleece fits perfectly on the face
- immerses the skin in a unique active ingredient bath



# PREMIUM SELECTION

## Triple Anti-Age Effect & Revitalization.

The golden secret of perfect care has been revealed! The PREMIUM SELECTION care is a multifunctional care for the highest demands! A true piece of jewelry and a creation of the luxury class that fulfills all care wishes.

The extraordinary density of ingredients in this luxurious texture gives an incomparable skin feeling. 24-karat gold leaf powder, highly effective high-tech components, delicate shimmer pigments and the powdery fragrance appeal to all the senses and exude pure luxury.

### In this product, we deliberately refrain from adding:



Mineral oil &  
parabens



PEGs



Silicones



Dyes



Animal-based  
ingredients



Gluten-  
containing  
ingredients



## PREMIUM SELECTION

### High Performance Cream

Triple Anti-Age Effect & Revitalization

*with Black Forest Complex,  
Wonder Lifting Complex & 24 Carat Gold*

- pampering and luxury for all the senses, paired with an extraordinary anti-aging effect
- a special care cream for the most demanding skin, which combines the best care properties



# EFFECT CARE

## Moisture & Tightening.

Practical and effective: The sheet mask nestles perfectly against the skin and constantly gives its high-quality ingredients to the skin, in high quantities and without barriers. In just a few minutes, the skin becomes optimally moisturized and supplied with power ingredients – for an effective beauty time-out in between and a visible immediate effect. The sheet mask is also "Made in Black Forest" according to the highest quality standards.

**In this product, we deliberately refrain from adding:**



Mineral oil &  
parabens



PEGs



Silicones



Perfume



Dyes



Animal-based  
ingredients



Lactose-  
containing  
ingredients



Gluten-  
containing  
ingredients



## EFFECT CARE

### 360° Lifting Sheet Mask | perfume free

Moisture & Tightening

*with Black Forest Complex, Hyaluronic Acid  
& Power Peptides*

- the skin appears deeply hydrated and tightened
- lines and wrinkles are minimized



# EFFECT CARE

For all those who want the maximum effect with their daily care ritual know that concentrates are indispensable. Because the regular use of concentrates brings daily care to a whole new level. The concentrated beauty portions distribute – thanks to their consistency – the ingredients directly to the skin and they can be transferred to the deeper layers of the epidermis.

**In these products, we deliberately refrain from adding:**



Mineral oil & parabens



PEGs



Silicones



Lactose-containing ingredients



Gluten-containing ingredients

**In addition, we refrain from using the following ingredients in the Lifting Boost Oil Concentrate:**



Dyes



Animal-based ingredients

**In addition, we refrain from using the following ingredients in the Hydra Boost Concentrate:**



Dyes



Animal-based ingredients

## EFFECT CARE

### Hydra Boost Concentrate

Moisture & Vitality

*with Black Forest Complex, Hyaluronic Acid & Caffeine*

- floods the skin with valuable moisture and helps the skin to store it effectively
- plumps up the skin

## EFFECT CARE

### Lifting Boost Oil Concentrate

Tightening & Regeneration

*with Black Forest Complex, Bakuchiol & Paracress Extract*

- combines the intense active ingredient power of a concentrate with the nourishing power of valuable oils
- promotes the skin's own regeneration mechanisms

## EFFECT CARE

### Vitamin Boost Concentrate

Energy & Radiance

*with Black Forest Complex, Vitamin C, B3 & B5*

- reveals a comprehensively perfected, even skin complexion with youthful luminosity and radiance
- optimizes the natural skin tone



# MASK SENSATION

Masks are the favorites of every "Home Spa Ritual". They are the ingredient kick and the pampering program for the skin and the soul. The skin benefits from the concentrated ingredient power, which intensively nourishes it in a few minutes and makes the complexion radiant like after a short holiday.

## MASK SENSATION

### Hydra Boost Mask

#### Moisture & Vitality

with *Black Forest Complex, Hyaluronic Acid & Caffeine*

- intensively hydrates and vitalizes the skin
- cushions dryness wrinkles

#### In this product, we deliberately refrain from adding:

- Mineral oil & parabens
- PEGs
- Silicones
- Dyes
- Lactosecontaining ingredients
- Glutencontaining ingredients



## MASK SENSATION

### Skin Rejuvenating Mask

Smoothing & Vitality

*with Black Forest Complex, PepTox<sup>2</sup> & Bakuchiol*

- smooths facial and expression lines
- makes the skin look plump and padded

**In this product, we deliberately refrain from adding:**

- Mineral oil & parabens
- PEGs
- Silicones
- Dyes
- Lactosecontaining ingredients
- Glutencontaining ingredients



# ESSENTIALS

## Tightening & Regeneration.

The neck area and décolleté are often criminally neglected in daily care! At the same time, the neck and décolleté deserve the same care as the face. Especially here, the skin has only a small amount of fatty tissue and also has fewer sebaceous glands than, for example, the face. In addition, the décolleté forms a so-called sun terrace and therefore receives more UV rays, which are an additional burden.

**In this product, we deliberately refrain from adding:**



Mineral oil &  
parabens



PEGs



Silicones



Lactose-  
containing  
ingredients



Gluten-  
containing  
ingredients



## ESSENTIALS

### Throat and Décolleté Treatment

Tightening & Regeneration

*with Black Forest Complex. Peptides & Instant Tight Complex*

- supports the structural components of the skin
- tightens and firms the decollete



# 360° LIFTING FOUNDATION SPF 15 | available in 4 colors

## Evenness & Tightening.

The foundation ensures an even complexion and a smoothed skin structure. Impurities, redness and large pores are concealed, and the skin looks radiant and fresh. With the perfect foundation, blush, mascara & Co. really come together! In addition, the latest generation of foundation also offers nourishing components and sun protection filters that both hydrate and tighten as well as provide light UV protection.

### In this product, we deliberately refrain from adding:



Mineral oil &  
parabens



PEGs



Silicones



Animal-based  
ingredients



Lactose-  
containing  
ingredients



Gluten-  
containing  
ingredients



## 360° Lifting Foundation SPF 15

Evenness & Tightening

*with Black Forest Complex, Niacinamides & Tripeptide-5*

- high coverage
- gives an even, mattified and refined complexion



# MEN

Since men's skin differs in structure from women's skin, it is not such a good idea to reach for the cream jar of the wife or girlfriend.

Men's epidermis is significantly thicker and contains more collagen, which keeps it firm for longer. The sebaceous glands produce more sebum, which quickly makes the skin look oily if the skin is given the wrong care. And regular shaving is a mechanical stimulus that stresses the skin. Therefore, everything speaks in favor of care products that are tailored to the needs of men's skin.

**In these products, we deliberately refrain from adding:**



Mineral oil &  
parabens



PEGs



Silicones



Dyes



Animal-based  
ingredients



Lactose-  
containing  
ingredients



Gluten-  
containing  
ingredients

## MEN

### Hydra Power Fluid

Moisture & Energy

*with Black Forest Complex, Hyaluronic Acid & Juniper Berries*

- moisture and energy booster
- hydrates and revitalizes the skin

## MEN

### Anti Age Rescue Care

Tightening & Vitality

*with Black Forest Complex, Tripeptide-5 & Juniper Berries*

- tightens the skin
- smoothes the skin's texture



# BIODROGA

medical institute

**Skin care close to medicine**

## **True Performance.**

Professional support, performance treatments and power INCI – at BIODROGA Medical Institute, stressed skin is in good hands.

Bye-bye problem skin, hello natural beauty. The key to maximum effectiveness lies in our innovative acid concept. In addition, our cleanness standards and close cooperation with dermatologists ensure optimal skin compatibility.



## Our secret Individual care concept.

Four consecutive steps maximize the effectiveness of dermatological high-tech care and ensure optimal care and protection of the skin.

**1** **Cleansing + Peeling**  
open the pores, make the  
skin receptive

**2** **Active Ingredient Serum**  
the high-performance product for  
individual skin problems

**3** **Skin-Specific Care**  
protects and nourishes the  
upper layer of the skin

**4** **Sun Protection + Finish**  
UV protection and tinted care for  
the perfect complexion

# Our secret: highly effective ingredients + specific acids.

ALL  
products are  
vegan

Our unique product concept combines high-performance ingredients and specific acids into formulations with maximum efficacy. → A specially selected acid is integrated into each of our products, which specifically supports the product performance as an effect booster.

## Acids are effect boosters!

Anyone who thinks exclusively of peeling when it comes to acids has not recognized the versatility of acids.

1. Basically, a distinction must be made between predominantly nourishing acids and exfoliating acids.
2. Whether the mode of action is predominantly nourishing or exfoliating, however, also depends on the concentration of the acid and the pH value of the formulation.
3. Therefore, by selecting the type of acid, acid concentration and pH value, the finest adjustment to a desired mode of action is possible.

Depending on the acidity and formulation, we differentiate according to the properties, concentration and pH value of the acid into a nourishing, skin layer smoothing or exfoliating effect.

## OUR FOCUS IS ON THE FOLLOWING ACIDS:

### "Nourishing" acids:

- Hyaluronic acid
- Amino acid
- Ascorbic acid
- Azelaic acid
- Silica
- Ferulic acid
- Glycolic acid
- Lactobionic acid

### "Skin Layer Smoothing" acids:

- Glycolic acid
- Salicylic acid
- Lactobionic acid

### "Exfoliating" acids:

- Glycolic acid
- Lactobionic acid
- Mandelic acid
- Phytic acid
- Salicylic acid

## DMC

# Derma Membrane Complex.

The Derma Membrane Complex, DMC for short, is physically very similar to the structure of the skin layer and orients itself with its ingredients to the components of the skin.

DMC is used as a structuring component in all cream formulations from BIODROGA Medical Institute and gives the products a particularly delicate texture.

Its unique, multifunctional blend of multiple components resembles in their sum in the skin lipids of the extracellular matrix of the stratum corneum.

Due to this skin-related structure, it is characterized by a particularly good skin compatibility. In addition, thanks to this structural similarity, DMC can, not only nourish and strengthen the skin barrier and support its regeneration, but also facilitates active ingredients penetration into the skin.

The Derma Membrane Complex enhances our creams in a unique way and supports their effectiveness.

# Product geography

## CLEANSING

CLEANSING FLUID  
CLARIFYING LOTION  
CALMING GEL-TO-OIL  
CALMING LOTION  
ENZYME BOOSTER PEELING  
10% AHA PEELING PADS

## SKIN BOOSTER

RETINAL SERUM  
5% PEPTIDE SERUM  
20% NIACINAMIDE SERUM  
3% HYALURONIC COMPLEX SERUM  
15% VITAMIN C SERUM  
2% BHA SERUM  
3% CBD COMPLEX SERUM  
10% AZELAIC SERUM  
EYELASH & BROW SERUM

## DAILY CARE

**EYE CONTACT**  
BALANCING EYE CARE  
FIRMING EYE CARE

**HYPER SENSITIVE**  
24H CARE  
24H CARE RICH

**CLEAR SKIN**  
ANTI-BLEMISH STICK  
24H ANTI AGE | RICH  
24H CARE FOR COMBINATION SKIN

**COUPEROSE**  
24H CARE

**MULTI-ACTION REJUVENATING**  
24H CARE  
24H CARE RICH

## LUXURY CARE

**ADVANCED EGF SKIN CONCEPT**  
24H CARE  
SERUM

## MASK PERFORMANCE

CLEANSING MASK  
CALMING MASK  
HYDRATING ANTI AGE MASK

## EFFECT CARE

**SUN**  
ADVANCED SUN PROTECTION CREAM SPF 50

**EVEN & PERFECT**  
CC CREAM SPF 20 ANTI-FATIGUE  
CC CREAM SPF 20 ANTI-REDNESS  
DD CREAM SPF 25 LIGHT  
DD CREAM SPF 25 DARK

**ALL  
products are  
vegan**

**BIODROGA**  
medical institute

# CLEANSING

Thoroughly cleansing the skin is more than a matter of cleanliness. It is the beginning of skin care with an individual care program that aims to sustainably optimize the respective complexion. Cleansing and peelings free the skin from all deposits, such as dead skin cells, make-up and environmental substances, which would burden the skin and hinder the absorption of ingredients.

**In these products, we deliberately refrain from adding:**



Mineral oil &  
parabens



PEGs



Silicones



Dyes



Animal-based  
ingredients



Lactose-  
containing  
ingredients



Gluten-  
containing  
ingredients

## CLEANSING

Cleansing Fluid | perfume free

*with Salicylic Acid & Zinc Gluconate*

- cleanses intensively
- dissolves accumulated sebum from the pores

## CLEANSING

Clarifying Lotion

*with Salicylic Acid & Zinc Gluconate*

- counteracts inflammatory processes
- prevents the development of impurities

## CLEANSING

Calming Gel-to-Oil

*with Lactic Acid & Annona Extract*

- cleanses particularly gently
- does not dry out

## CLEANSING

Calming Lotion | perfume free

*with Lactic Acid & Annona Extract*

- cleanses particularly gently
- reduces skin sensitivity

## CLEANSING

Enzyme Booster Peeling | perfume free

*with Lactic Acid & Exfolboost*

- cleanses particularly gently
- does not dry out

## CLEANSING

10% AHA Peeling Pads | perfume free

*with Glycolic Acid & Vitamin B5*

- easy to use
- gently removes dead skin cells



## The top performers

# SKIN BOOSTER.

The SKIN BOOSTER serums are a central element of our concept for systematic skin care. The serums offer specifically formulated active ingredient libraries that are precisely tailored to the respective desired product performance. Due to their composition and high concentration of ingredients they make the most intensive contribution and sustainable improvement to the skin situation.

**In these products, we deliberately refrain from adding:**



Mineral oil &  
parabens



PEGs



Silicones



Dyes



Animal-based  
ingredients



Lactose-  
containing  
ingredients



Gluten-  
containing  
ingredients



## High-tech active ingredients + acid booster

SKIN BOOSTER serums are designed as problem solvers. Peptides, vitamins, antioxidants and hightech ingredients paired with individual acids form the basis of the highly efficient power products and are thus the key to maximum effectiveness.

In each of our products is a specially selected acid, which acts as an active booster. The product performance is maximized. The SKIN BOOSTER Serums are predominantly nourishing or skin layer smoothing acids.

## pH-Management

In addition to acid peeling, the serums also provide an important contribution to pH-management.

The "normal" pH of the skin is between 4.5 and 5.5. Slight fluctuations in pH levels, depending on the region of the body, the season or time of day and age are normal. For some skin problems such as impure or mature skin, however, longer lasting pH value shifts can occur. The skin pH can reach levels up to about 6.5. This change can be counteracted by suitable care products, such as serums with a slightly acidic pH value. The natural skin barrier and its functions become strengthened, and a healthy skin microbiome is promoted.

## SKIN BOOSTER

Retinal Serum | perfume free

Anti-Age Allrounder | pH 5.0

*with Retinal & Hyaluronic Acid*

- promotes skin cell renewal and stimulates collagen biosynthesis
- supports the skin's regeneration

## SKIN BOOSTER

5% Peptide Serum

Recontouring & Vitality | pH 4.1

*with 5-Fold Peptide Complex & Ferulic Acid*

- the answer to decreasing skin elasticity and sagging facial contours
- restructures the epidermis

## SKIN BOOSTER

20% Niacinamide Serum | perfume free

Evenness & Skin Refinement | pH 4.0

*with Vitamin B3 & Azelaic Acid*

- promotes an even complexion
- refines the pores and smoothes the skin structure

## SKIN BOOSTER

3% Hyaluronic Complex Serum | perfume free

Hydration & Plumping | pH 5,0

*with Hyaluronic Complex & Power Peptides*

- maximum hydration with depot effect
- protects against moisture loss



## SKIN BOOSTER

15% Vitamin C Serum | perfume free

Pigment Balance & Vitality | pH 4,3

*with Tranexemic Acid & Vitamin C*

- improves the evenness of the skin
- lets pigment spots fade

## SKIN BOOSTER

2% BHA Serum | perfume free

Anti-Blemish & pH Balance | pH 4,0

*with Salicylic Acid & Zinc Gluconate*

- frees clogged pores
- compensates for excessive sebum production

## SKIN BOOSTER

Eyelash & Brow Serum | perfume free

Volume & Length

*with Triple Lash Active Complex & Hyaluronic Acid*

- supports natural hair growth and extends the growth phase
- promotes longer and fuller lashes & brows

## SKIN BOOSTER

3% CBD Complex Serum | perfume free

Smoothing & Repair | pH 5,0

*with CBD-Complex & Oligo-Hyaluronic Acid*

- has a balancing effect
- soothes irritations

## SKIN BOOSTER

10% Azelaic Serum | perfume free

Anti-Redness & Couperose | pH 5,0

*with Couperocalm & Azelaic Complex*

- has an anti-inflammatory effect
- evens out the appearance of Couperosis



# EYE CONTACT

The skin of the eye contours is the thinnest and most sensitive area of the face. It has fewer collagen and elastin fibers and sebaceous glands, which protect the skin from drying out. In addition, the skin in the eye area is constantly kept in motion by the mimic muscles and the blink of the eye. These are good reasons to support this particularly delicate area with special eye care.

## EYE CONTACT

### Balancing Eye Care

#### Balance & Hydration

*with Anti-Stress Complex & Hyaluronic Acid*

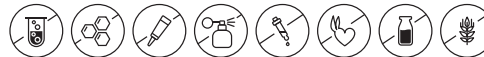
- hydrates intensively and longlasting
- soothes the sensitive eye area
- alleviates feelings of tension and irritation
- minimizes dryness wrinkles and reduces eye shadows

#### **Application:**

Apply to cleansed eye area and pat gently.  
15 ml

#### **In this product, we deliberately refrain from adding:**

- Mineral oil & parabens
- PEGs
- Silicones
- Perfume
- Dyes
- Animal-based ingredients
- Lactosecontaining ingredients
- Glutencontaining ingredients



## EYE CONTACT

### Firming Eye Care

#### Smoothing & Vitality

*with Novo Peptide<sup>3</sup> Technology & Amino Acid*

- offers 3-fold anti-aging power for a firm and radiant eye area
- minimizes lines and wrinkles
- improves the elasticity of the skin
- visibly softens drooping eyelids, eye shadows and dryness wrinkles

#### **Application:**

Apply to cleansed eye area and pat gently.

15 ml

#### **In this product, we deliberately refrain from adding:**

- Mineral oil & parabens
- PEGs
- Silicones
- Dyes
- Animal-based ingredients
- Lactosecontaining ingredients



# HYPER SENSITIVE

## Calming & Barrier Strengthening.

There are countless causes, especially for sensitive skin, and it manifests itself in a wide variety of forms and degrees of severity.

It can be genetically determined, caused by inflammatory processes or skin diseases such as neurodermatitis, due to the environment, or due to deliberately set disorders caused by plastic-aesthetic treatments.

In any case, sensitive skin needs soothing care that hydrates, restores the skin barrier and slows down inflammatory processes.

### In this product, we deliberately refrain from adding:



Mineral oil & parabens



PEGs



Silicones



Dyes



Animal-based ingredients



Lactose-containing ingredients



Gluten-containing ingredients

## HYPER SENSITIVE

24h Care | perfume free

Soothing + Barrier Support

with *Microbiome Complex & PHA Acid*

- provides balancing effects
- calms stressed skin

## HYPER SENSITIVE

24h Care | rich

Soothing & Barrier Support

with *Microbiome Complex & PHA Acid*

- soothes sensitive & dry skin
- promotes a healthy skin microbiome



## CLEAR SKIN

Even though they tend to decrease over the years, they can occur again and again, at any age and with any skin type. The causes of blemished skin are manifold. Hormonal, environmental, poor diet or stress – pimples are annoying and impair the appearance. Instead of covering the unsightly marks with make-up, it is better to treat blemished skin in a targeted manner and to achieve a sustainable improvement with effective ingredients.

**In these products, we deliberately refrain from adding:**



Mineral oil &  
parabens



PEGs



Silicones



Dyes



Animal-based  
ingredients



Lactose-  
containing  
ingredients



Gluten-  
containing  
ingredients

## CLEAR SKIN

Anti-Blemish Stick | perfume free

Anti-Blemishes & Soothing

*with Salicylic Acid & Zinc*

- SOS product offers quick help, works overnight
- for local control of impurities

## CLEAR SKIN

24h Care Anti Age | rich & perfume free

Anti-Blemishes & Sebum Balance

*with Salicylic Acid & Niacinamide*

- has an antimicrobial and anti-comedogenic effect
- dissolves sebum residues from the sebaceous glands

## CLEAR SKIN

24h Care Combination Skin

Anti-Blemishes & Sebum Balance

*with Salicylic Acid & Niacinamide*

- light, non-greasy care
- has an antimicrobial and anti-comedogenic effect



# COUPEROSE

## Anti-Redness & Vascular Strengthening.

Although couperose is annoying, it is harmless to health. However, it is considered a precursor of rosacea, which, as a chronic inflammatory skin disease, requires medical treatment. Couperose is manifested by the typical redness and visibly dilated veins and often leads to increased sensitivity of the skin.

It often occurs in episodes of spontaneous reddening of the skin caused by triggers such as caffeine, spicy foods, temperature extremes, stress, etc. In addition to avoiding triggers, mild cleansing and gentle care is the method of choice.

### In this product, we deliberately refrain from adding:



Mineral oil &  
parabens



PEGs



Silicones



Perfume



Animal-based  
ingredients



Lactose-  
containing  
ingredients



Gluten-  
containing  
ingredients



## COUPEROSE

### 24h Care

Anti-Redness & Vascular Strengthening  
*with Couperesil & Azelaic Complex*

- softens the severity of couperose
- makes redness gradually fade



# MULTI-ACTION REJUVENATING

## Lifting & Radiance.

The formula, enriched with the advanced ATPreserve Complex and 3D Hyaluronic Acid, specifically counteracts visible signs of premature skin aging. Its silky texture melts into the skin, supporting natural skin regeneration. Fine lines appear smoothed, facial contours look more defined, and the complexion gains evenness. At the same time, the formula protects against oxidative stress and provides an energizing effect. For a noticeably younger, firmer complexion with renewed radiance.

**In these products, we deliberately refrain from adding:**



Mineral oil &  
parabens



PEGs



Silicones



Perfume



Dyes



Animal-based  
ingredients



Lactose-  
containing  
ingredients

## MULTI-ACTION REJUVENATING

### 24h Care

#### Lifting & Radiance

*with ATPreserve Complex & 3D Hyaluronic Acid*

- promotes skin firmness and elasticity
- reduces wrinkles and helps prevent their formation
- supports natural skin regeneration

## MULTI-ACTION REJUVENATING

### 24h Care | rich

#### Lifting & Radiance

*with ATPreserve Complex & 3D Hyaluronic Acid*

- promotes skin firmness and elasticity
- reduces wrinkles and helps prevent their formation
- balances dry skin and leaves the complexion more radiant and even



# ADVANCED EGF SKIN CONCEPT

## Premium Anti Age Allrounder.

With increasing age, the skin becomes more and more demanding, and the care wishes are often not limited to a single skin issue. In order to take into account a comprehensive anti-age concept, the premium care line serves different concerns at the same time. The forward-looking active ingredient compositions take care of wrinkles, loss of elasticity, an uneven complexion, age spots and skin dryness.

It is the perfect choice for the highest care requirements.

### In these products, we deliberately refrain from adding:



Mineral oil &  
parabens



PEGs



Silicones



Perfume



Dyes



Animal-based  
ingredients



Lactose-  
containing  
ingredients



Gluten-  
containing  
ingredients

# ADVANCED EGF SKIN CONCEPT

## Serum

Premium Anti Age Allrounder

*with EGF, Polyglutamic Acid & Biotec Vegan Collagen*

- reduces wrinkles
- improves elasticity and recontours

# ADVANCED EGF SKIN CONCEPT

## 24h Pflege

Premium Anti Age Allrounder

*with EGF, Polyglutamic Acid & Biotec Vegan Collagen*

- reduces wrinkles
- improves elasticity and resilience



# MASK PERFORMANCE

The masks are not only loaded with a high concentration of active ingredients, but they also receive extra points with the multidimensional effect that only masks can offer.

The ingredients are specifically geared to the desired care effect and are constantly released into the skin in just 10 minutes.

**In these products, we deliberately refrain from adding:**



Mineral oil &  
parabens



PEGs



Silicones



Dyes



Animal-based  
ingredients



Lactose-  
containing  
ingredients



Gluten-  
containing  
ingredients

## MASK PERFORMANCE

Cleansing Mask | perfume free

Deep Cleansing & Clear Complexion

with *Salicylic Acid & Zinc Gluconate*

- cleanses pore-deep
- clarifies the skin

## MASK PERFORMANCE

Calming Mask | perfume free

Balance & Regeneration

with *Linoleic Acid & CBD Complex*

- SOS mask for sensitive, irritationprone skin
- gently soothes and supports skin regeneration

## MASK PERFORMANCE

Hydrating Anti Age Mask

Hydration & Firming

with *Oligo-Hyaluronic Acid & 5-Fold Peptide Complex*

- moisturizes the skin sustainably
- restructures the structuring fiber network of the skin



# SUN

## UV rays – the skin aging factor no. 1

Sun plays a big role in skin aging. Experts estimate that up to 80 percent of all visible skin aging processes are the result of a too high level of UV radiation without adequate protection. They lead to an increased formation of free radicals.

An excess of UV rays overwhelms the body's own protection system. In addition, free radicals activate enzymes that specialize in the breakdown of collagen and dissolve the connective tissue. The visible consequences are wrinkles, loss of elasticity and pigment spots.

### In this product, we deliberately refrain from adding:



Mineral oil &  
parabens



PEGs



Silicones



Dyes



Animal-based  
ingredients



Lactose-  
containing  
ingredients



Gluten-  
containing  
ingredients



SPF 50



**SUN**

Advanced Sun Protection Cream  
SPF 50

UVA / UVB Protection & Cell Protection

*with Advanced UV-Filter Technology &  
Ascorbic Acid*

- provides protection against UVA, UVB, and blue light rays as well as free radicals
- prevents light-induced premature skin aging

# EVEN & PERFECT

## Care & Make-Up.

The multifunctional products of the EVEN & PERFECT line are very popular. Because the smart CC and DD creams offer several benefits and are quick and easy to use. Optionally, they offer light to high coverage, conceal any blemishes as needed and give a more even, perfected complexion. With their special active formula, they also offer a skin-improving effect as the last step in the daily skin care routine.

### In these products, we deliberately refrain from adding:



Mineral oil &  
parabens



PEGs



Silicones



Perfume



Animal-based  
ingredients



Lactose-  
containing  
ingredients



Gluten-  
containing  
ingredients

## EVEN & PERFECT

CC Cream Anti-Redness SPF 20

Complexion Optimization & Anti-Redness

*with Vitamin Complex & Hyaluronic Acid*

- soothes irritated skin and redness
- helps redness and impurities to subside faster

## EVEN & PERFECT

DD Cream Light/Dark SPF 25

Complexion Optimization & Protection

*with Glutathion Mimetic Peptides & Hyaluronic Acid*

- protects against oxidative stress and UV-induced skin damage
- optimizes the moisture level

## EVEN & PERFECT

CC Cream Anti-Fatigue SPF 20

Complexion Optimization & Anti-Tiredness

*with Vitamin Complex & Hyaluronic Acid*

- adapts to the individual skin tone
- conceals small blemishes



# Experience the power of the Black Forest

## Natural cosmetics from the Black Forest



Certified Natural  
Cosmetics

Immerse yourself in the magical world of natural cosmetics from BIODROGA Organic Institute, which combines the healing power of Black Forest herbs and the precious extract of healing moor.

The application of these natural cosmetics becomes a ritual in which the energy of nature can be felt on the skin. With BIODROGA Organic Institute you will not only experience beauty, but also the deep connection with nature. A luxurious moment of care with natural high-performance products.

### Our secret

## Certified Natural Cosmetics at Expert Level

Beautiful by nature. BIODROGA Organic Institute offers certified natural cosmetics at expert level. Concentrated on the essentials for a healthy, natural radiance.

Only carefully selected natural substances of selected origin are used in the products.

In doing so, our cosmetics and medicinal plant experts have always focused on effectiveness and genuine well-being. For a natural care experience without compromise.

Our secret

# Local Herbs from the Black Forest



## 5-fold Phyto Complex

This unique composition forms the heart of all BIODROGA Organic Institute products. The 5-fold Phyto Complex combines the powers of 5 herbs that have a long history of use in the Black Forest in the care of the skin. This centuries-old knowledge is integrated into every BIODROGA Organic Institute product with the 5-fold Phyto Complex. The complex combines Nettle, Chamomile, Lady's Mantle, Rose and Hyssop to create a balanced selection for naturally beautiful skin.



NETTLE

- Gives the skin freshness and vitality
- Has an antioxidant and protective effect
- Has an antibacterial and sebum-regulating effect



CHAMOMILE

- Soothes stressed skin
- Has an anti-inflammatory and skin-soothing effect
- Brings the skin back into balance



LADY'S MANTLE

- Promotes youthful radiance
- Has an astringent and calming effect
- Has a balancing effect



ROSE

- Has a harmonizing effect
- Moisturizes
- Has a soothing effect on the skin



HYSSOP

- Has an invigorating and vitalising effect
- Has an antioxidant effect

## Our cooperation

# Regional Herbs from the Black Forest

The Black Forest is rich in natural treasures for the skin, full of vitamins and antioxidants. From soothing chamomile to vitalising nettle, local medicinal herbs have been proven to have positive effects on the skin. The connection to nature in every drop gives the skin radiant vitality with the exclusive 5-fold Phyto Complex. For the 5-fold Phyto Complex, we work together with the Herb Farm.

The Herb Farm is an association of qualified medicinal plant specialists, nature and herb educators.

The flowers and herbs are grown in balance with the local nature in the highest organic quality, harvested and dried in whole leaves and blossoms.



Our secret

## The Power of the Healing Moor, Inspired by the Black Forest

### Healing Moor

The healing properties of the moor were already known in the Middle Ages. Healing moor, also known as therapeutic moor, is a natural product that is formed by decomposition processes over thousands of years. This process results in a rich concentration of humic acids, minerals, trace elements and organic substances in the moor. In folk medicine, healing moor has long been valued for its health-promoting properties.

### The concentrated power of nature from over a thousand years

- Deep cleansing
- Harmonizing
- Vitalizing
- Strengthens the skin's resistance



## Our cooperation

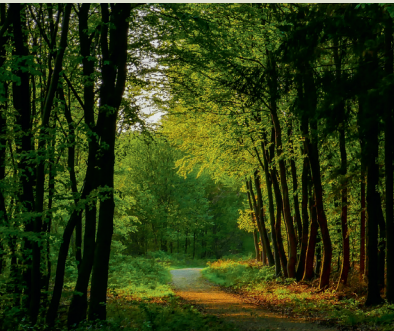
# Nature Park Black Forest High Moor Kaltenbronn



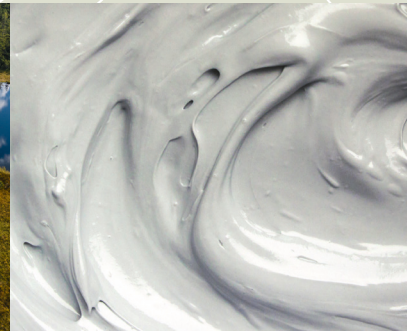
NATURPARK SCHWARZWALD  
MITTE/NORD

The Black Forest is known for its picturesque landscape, mystical forests and rolling hills. But in addition to these familiar images, the Black Forest is also home to one of the most fascinating and rare landscapes in the world: The High Moor

These unique ecosystems offer breathtaking nature experiences as well as opportunities for relaxation and deceleration. They are a true natural wonder and contribute to the impressive diversity of our region. Therefore, we are proud to be able to support special projects for the preservation of this valuable environment worthy of protection as part of our long-standing partnership with the Black Forest Central/North Nature Park. Together we can learn from nature and our homeland and thus combine nature and science in a very special way in our care products.



© M. Keppler





# Product geography

## PHYTO CLEANSING

### TAKE IT OFF

PHYTO CLEANSING MILK

### CALM DOWN

PHYTO TONIC

### DOWN TO EARTH

PHYTO HEALING MOOR PEELING MASK

## HEROES

### TAKE A BREATH

PHYTO THERAPY OIL ESSENCE

## PHYTO ESSENCE

### REFIRM

FIRMING PHYTO ESSENCE

### REBALANCE

MOISTURIZING PHYTO ESSENCE

### REFINE

SKIN-REFINING PHYTO ESSENCE

## PHYTO CARE

### KEEP ME SAFE

MOISTURIZING PHYTO CARE

### KEEP ME SAFER

PROTECTIVE PHYTO DAY CARE SPF 15

### KEEP ME BRIGHT

PHYTO EYE CARE

### LIFT ME UP

FIRMING PHYTO MASK



# HERO PRODUCT

Experience the decelerating power of the Black Forest with the harmonious active ingredient composition of the Phyto Therapy Oil Essence. The uniquely smooth texture can be combined with all BIODROGA Organic Institute care products and essences and enhances the nourishing effect of each individual product.

**Mix & Match:** It can be mixed with the 24-hour care and the peeling mask.

**Layering:** It can be applied as a nourishing oil after the essences.

## TAKE A BREATH

Phyto Therapy Oil Essence

Regeneration & Vitalization.

*with 5-fold Phyto Complex, Bisabolol and Squalane*

- Nourishes the skin and strengthens the skin barrier
- Stabilizes moisture and lipid balance
- Dryness lines and wrinkles are balanced
- Optimal basis for Face Yoga treatments

**With this product, we deliberately refrain from adding:**

- Mineral oil & parabens
- PEGs
- Silicones
- Dyes
- Animal-based ingredients
- Lactose-containing ingredients
- Gluten-containing ingredients



# PHYTO CLEANSING

Our modern lifestyle means that our skin is increasingly exposed to environmental influences. Make-up, dirt particles and skin cells are deposited in the pores and can put the skin under stress. Daily cleansing and regular exfoliation free the skin from deposits and allow it to breathe again.

## TAKE IT OFF

### Phyto Cleansing Milk

Cleansing & Balance.

*with 5-fold Phyto Complex, Healing Moor Extract and Bisabolol*

- Pollution from everyday life and the environment is gently removed
- Cleanses the skin deep into the pores
- The acid mantle is not disturbed
- Skin is refreshed and feels supple and soft

**With this product, we deliberately refrain from adding:**

- Mineral oil & parabens
- PEGs
- Silicones
- Dyes
- Animal-based ingredients
- Lactose-containing ingredients
- Gluten-containing ingredients



## CALM DOWN

### Phyto Tonic

Calming & Revitalization.

*with 5-fold Phyto Complex, Betaine and Prebiotics*

- Mild facial toner at the end of the cleansing routine
- Gently removes the residues of the cleansing products
- Soothes and refreshes the skin
- Rebalances the skin

**With this product, we deliberately refrain from adding:**

- Mineral oil & parabens
- PEGs
- Silicones
- Dyes
- Animal-based ingredients
- Lactose-containing ingredients
- Gluten-containing ingredients



## DOWN TO EARTH

### Phyto Healing Moor Peeling Mask

Deep Cleansing & Regeneration.

*with 5-fold Phyto Complex, Healing Moor Extract and Bamboo Beads*

- 2 in 1: Healing Moor peeling and mask
- Texture reflects Black Forest soil and healing moor
- For an even complexion
- Promotes a balanced skin flora
- For visibly relaxed, radiant skin

**With this product, we deliberately refrain from adding:**

- Mineral oil & parabens
- PEGs
- Silicones
- Animal-based ingredients
- Lactose-containing ingredients





# PHYTO ESSENCE

Our skin is as unique as its needs. If the skin loses moisture, appears limp, pale and uneven, it needs support. Highly concentrated active essences contain up to three times as many active ingredients as skincare cream. Thanks to their light texture, the highly active phyto essences penetrate into the deep layers of the skin and supply it with their valuable ingredients.

Tailored to the individual skin needs, the skin gains youthful radiance, a strong skin protective barrier and a healthy glow.

## REFIRM

### Firming Phyto Essence

Tightening & Recontouring.

*with 5-fold Phyto Complex, Lady's Mantle and Bakuchiol*

- Fights signs of skin aging
- Stimulates collagen production
- Reduces lines and wrinkles
- Tightens the skin
- Recontours the facial contour

### With this product, we deliberately refrain from adding:

- Mineral oil & parabens
- PEGs
- Silicones
- Dyes
- Animal-based ingredients
- Lactose-containing ingredients
- Gluten-containing ingredients



## REBALANCE

### Moisturizing Phyto Essence

Hydration & Barrier Strengthening.

*with 5-fold Phyto Complex, Chamomile and Hyaluronic Acid*

- Moisture level of the skin is improved with an immediate effect and in the long term
- Visibly plumps up the skin
- The skin barrier is strengthened in the long term
- Soothes the skin and has a balancing effect

**With this product, we deliberately refrain from adding:**

- Mineral oil & parabens
- PEGs
- Silicones
- Animal-based ingredients
- Lactose-containing ingredients
- Gluten-containing ingredients



## REFINE

### Skin Refining Phyto Essence

Skin Refinement & Evenness.

*with 5-fold Phyto Complex, Rose and Vitamin C*

- Has an antioxidant and pore-refining effect
- Promotes a healthy, natural glow
- Refines the complexion of the skin
- Improves skin firmness and elasticity
- Reduces pigmentation spots

**With this product, we deliberately refrain from adding:**

- Mineral oil & parabens
- PEGs
- Silicones
- Dyes
- Animal-based ingredients
- Lactose-containing ingredients
- Gluten-containing ingredients





REFINE  
Anti-Redness Phyto-Essence  
BIODROGA  
organic institute

REFIRM  
Firming Phyto-Essence  
BIODROGA  
organic institute

# PHYTO CARE

The skin is the protective shield of our body. It is exposed to environmental influences and stresses on a daily basis. The consequences can be moisture loss, premature skin aging and a weakened skin protective barrier. Like armor, the skin must be cared for and supported in its natural function.

The Phyto Care products provide the skin with intensive moisture, visibly reduce the signs of skin aging and support the skin in its natural protective function.

## KEEP ME SAFE

### Moisturizing Phyto Care

Hydration & Plumping.

*with 5-fold Phyto Complex, Bakuchiol and Hyaluronic Acid*

- Universal day and night care
- For a rich version, care can be enriched with Phyto Essence
- Has a plumping and moisturizing effect
- Prevents signs of aging
- Stimulates collagen synthesis and reduces fine lines and wrinkles

### With this product, we deliberately refrain from adding:

- Mineral oil & parabens
- PEGs
- Silicones
- Animal-based ingredients
- Lactose-containing ingredients
- Gluten-containing ingredients



## KEEP ME SAFER

### Protective Phyto Day Care SPF 15

Hydration & Protection.

*with 5-fold Phyto Complex, Bakuchiol and Ectoin*

- Universal day care with sun protection factor
- For more richness, the Care can be enriched with the phyto oil essence
- Offers protection against environmental influences, negative effects of sun rays and premature skin aging
- A visibly even complexion

**With this product, we deliberately refrain from adding:**

- Mineral oil & parabens
- PEGs
- Silicones
- Animal-based ingredients
- Lactose-containing ingredients
- Gluten-containing ingredients



## KEEP ME BRIGHT

### Phyto Eye Care

Hydration + Radiance.

*with 5-fold Phyto Complex, Healing Moor Extract and Poppy Seed Extract*

- Intense hydration care
- Counteracts signs of fatigue and dark circles under the eyes
- Reduces fine lines and early wrinkles and improves skin firmness
- Reduces fine lines and early wrinkles and improves skin firmness
- Restores freshness and gives a vibrant radiance

**With this product, we deliberately refrain from adding:**

- Mineral oil & parabens
- PEGs
- Silicones
- Animal-based ingredients
- Lactose-containing ingredients
- Gluten-containing ingredients



## LIFT ME UP

### Firming Phyto Mask

Smoothing + Regeneration.

*with 5-fold Phyto Complex, Healing Moor Extract and Paracress Extract*

- Effective skincare and pampering experience all in one
- Has a plumping and moisturizing effect
- Leaves the skin looking plumper and more supple
- provides visible skin tightening immediately after application

**With this product, we deliberately refrain from adding:**

- Mineral oil & parabens
- PEGs
- Silicones
- Animal-based ingredients
- Lactose-containing ingredients
- Gluten-containing ingredients



## YOUR PERSONALIZED SKINCARE ROUTINE

bioscience institute

medical institute



### HEROES

Black Forest Spray	<input type="checkbox"/>	<input type="checkbox"/>	
2-Phase Black Forest Concentrate	<input type="checkbox"/>	<input type="checkbox"/>	

### CLEANSING

CLEANSING		CLEANSING	
Cleansing Oil	<input type="checkbox"/>	Cleansing Fluid	<input type="checkbox"/>
Milky Cleanser	<input type="checkbox"/>	Clarifying Lotion	<input type="checkbox"/>
Cleansing Foam	<input type="checkbox"/>	Calming Gel-To-Oil	<input type="checkbox"/>
Toner	<input type="checkbox"/>	Calming Lotion	<input type="checkbox"/>
10% Acid Peeling	<input type="checkbox"/>	Enzyme Booster Peeling	<input type="checkbox"/>
Facial Exfoliator	<input type="checkbox"/>	10% AHA Peeling Pads	<input type="checkbox"/>
Make-Up Remover Balm	<input type="checkbox"/>		
Antiperspirant	<input type="checkbox"/>		

### EFFECT CARE + PROBLEM SOLVERS

EFFECT CARE		SKIN BOOSTER	
360° Lifting Vliesmaske	<input type="checkbox"/>	Retinal Serum	<input type="checkbox"/>
Hydra Boost Concentrate	<input type="checkbox"/>	5% Peptide Serum	<input type="checkbox"/>
Lifting Boost Oil Concentrate	<input type="checkbox"/>	20% Niacinamide Serum	<input type="checkbox"/>
Vitamin Boost Concentrate	<input type="checkbox"/>	2% BHA Serum	<input type="checkbox"/>
		3% Hyaluronic Complex Serum	<input type="checkbox"/>
ESSENTIALS		10% Azelaic Serum	<input type="checkbox"/>
Hals- und DécolletéCare	<input type="checkbox"/>	3% CBD Complex Serum	<input type="checkbox"/>
		15% Vitamin C Serum	<input type="checkbox"/>
		Eyelash & Brow Serum	<input type="checkbox"/>

### MASK PROGRAM

MASK SENSATION		MASK PERFORMANCE	
Hydra Boost Mask	<input type="checkbox"/>	Cleansing Mask	<input type="checkbox"/>
Skin Rejuvenating Mask	<input type="checkbox"/>	Calming Mask	<input type="checkbox"/>
		Hydrating Anti Age Mask	<input type="checkbox"/>

bioscience institute

medical institute



### EYE + FACE CARE

EYE CARE		EYE CONTACT	
Hydra Boost Eye Cream	<input type="checkbox"/>	Balancing Eye Care	<input type="checkbox"/>
Lifting Boost Eye Balm	<input type="checkbox"/>	Firming Eye Care	<input type="checkbox"/>
MOISTURE & BALANCE		HYPER SENSITIVE	
24h Creme-Gel	<input type="checkbox"/>	24h Care	<input type="checkbox"/>
24h Care	<input type="checkbox"/>	24h Care   rich	<input type="checkbox"/>
24h Care   rich	<input type="checkbox"/>		
Basic Moist Fluid	<input type="checkbox"/>		
REPAIR & PROTECT		COUPEROSE	
All Day Protection SPF 20	<input type="checkbox"/>	24h Care	<input type="checkbox"/>
Overnight Repair Cream	<input type="checkbox"/>		
SLOW AGE		MULTI-ACTION REJUVENATING	
24h Care	<input type="checkbox"/>	24h Care	<input type="checkbox"/>
24h Care   rich	<input type="checkbox"/>	24h Care   rich	<input type="checkbox"/>
ANTI AGE		CLEAR SKIN	
24h Care	<input type="checkbox"/>	Anti-Blemish Stick	<input type="checkbox"/>
24h Care   rich	<input type="checkbox"/>	24h Care Anti Age   rich	<input type="checkbox"/>
Serum	<input type="checkbox"/>	24h Care Combination Skin	<input type="checkbox"/>
PERFECT AGE			
24h Care	<input type="checkbox"/>		
24h Care   rich	<input type="checkbox"/>		
Serum	<input type="checkbox"/>		

bioscience institute



medical institute



LUXURY + PREMIUM CARE

GOLDEN CAVIAR		EGF	
24h Care	<input type="checkbox"/> <input type="checkbox"/>	24h Care	<input type="checkbox"/> <input type="checkbox"/>
24h Care   rich	<input type="checkbox"/> <input type="checkbox"/>	Serum	<input type="checkbox"/> <input type="checkbox"/>
Sheet Mask	<input type="checkbox"/> <input type="checkbox"/>		
PREMIUM SELECTION			
High Performance Cream	<input type="checkbox"/> <input type="checkbox"/>		

MAKE UP + FINISH

360° FOUNDATION		EVEN & PERFECT	
01 Porcelain SPF 15	<input type="checkbox"/> <input type="checkbox"/>	CC Cream	<input type="checkbox"/> <input type="checkbox"/>
02 Sand SPF 15	<input type="checkbox"/> <input type="checkbox"/>	Anti-Fatigue SPF 20	
03 Honey SPF 15	<input type="checkbox"/> <input type="checkbox"/>	CC Cream	<input type="checkbox"/> <input type="checkbox"/>
05 Rose SPF 15	<input type="checkbox"/> <input type="checkbox"/>	Anti-Redness SPF 20	
		DD Cream Light SPF 25	<input type="checkbox"/> <input type="checkbox"/>
		DD Cream Dark SPF 25	<input type="checkbox"/> <input type="checkbox"/>

UV PROTECTION

SUN	
Advanced Sun Protection Cream SPF 50	<input type="checkbox"/> <input type="checkbox"/>

MEN SKINCARE

MEN	
Hydra Power Fluid	<input type="checkbox"/> <input type="checkbox"/>
Anti Age Rescue Care	<input type="checkbox"/> <input type="checkbox"/>

organic institute



HERO

TAKE A BREATH Phyto Therapy Oil Essence	<input type="checkbox"/> <input type="checkbox"/>
---	---

PHYTO CLEANSING

TAKE IT OFF Phyto Cleansing Milk	<input type="checkbox"/> <input type="checkbox"/>
CALM DOWN Phyto Tonic	<input type="checkbox"/> <input type="checkbox"/>
DOWN TO EARTH Phyto Healing Moor Peeling Mask	<input type="checkbox"/> <input type="checkbox"/>

PHYTO ESSENCES

REFIRM Firming Phyto Essence	<input type="checkbox"/> <input type="checkbox"/>
REBALANCE Moisturizing Phyto Essence	<input type="checkbox"/> <input type="checkbox"/>
REFINE Skin Refining Phyto Essence	<input type="checkbox"/> <input type="checkbox"/>

PHYTO CARE

KEEP ME SAFE Moisturizing Phyto Care	<input type="checkbox"/> <input type="checkbox"/>
KEEP ME SAFER Protective Phyto Day Care SPF 15	<input type="checkbox"/> <input type="checkbox"/>
KEEP ME BRIGHT Phyto Eye Care	<input type="checkbox"/> <input type="checkbox"/>
LIFT ME UP Firming Phyto Mask	<input type="checkbox"/> <input type="checkbox"/>

Other recommendations/notes

---



---



---



---



---







A misty forest landscape with sunlight filtering through the trees. The scene is dominated by tall, dark green coniferous trees, likely spruce or fir, which are partially obscured by a thick layer of white mist or fog. The sun is positioned in the upper left quadrant, creating a bright, golden glow that illuminates the scene and casts long, soft shadows. The overall atmosphere is serene and natural, suggesting a clean and healthy environment.

# BIODROGA

Biodroga Cosmetic GmbH · Im Rosengarten 7 · 76532 Baden-Baden, Germany  
[www.biodroga.com](http://www.biodroga.com) · [biodroga@bcg-cosmetics.de](mailto:biodroga@bcg-cosmetics.de)